

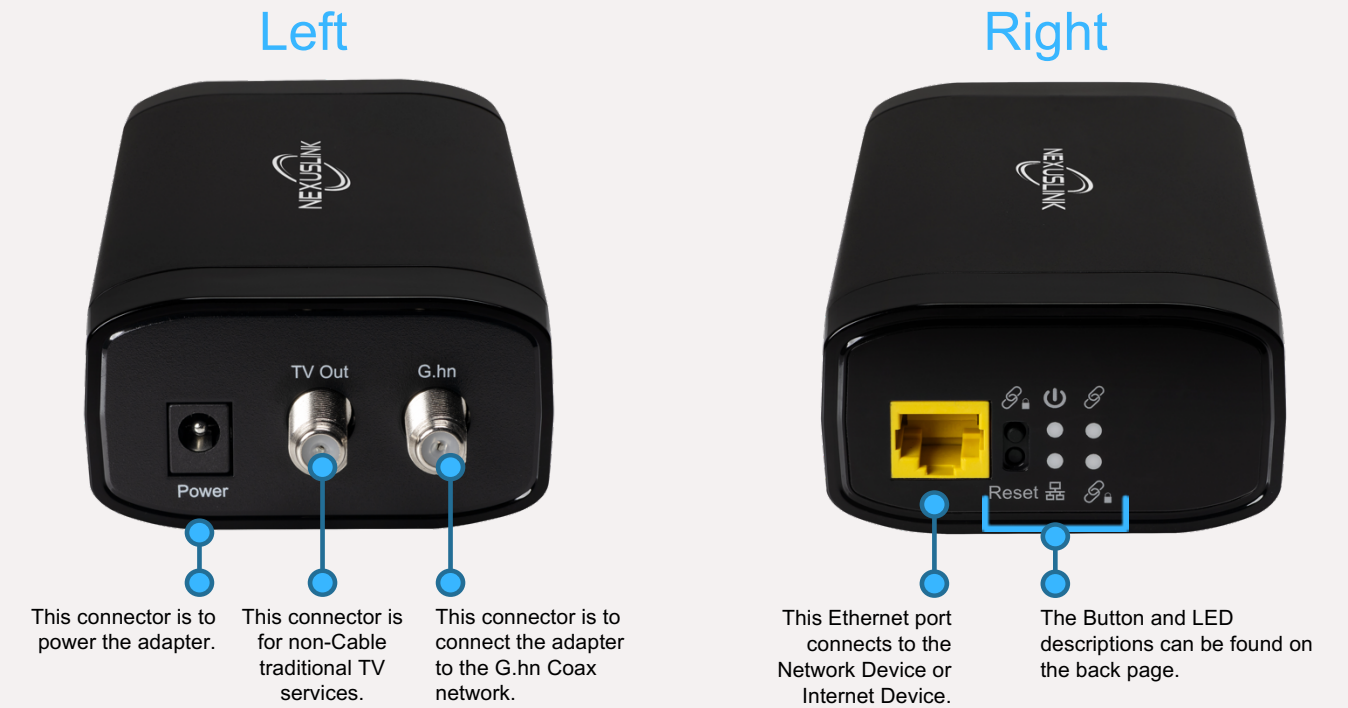
Quick Installation Guide

GCA-2000-KIT G.hn Coax Adapter Kit

Get To Know Your G.hn Wave 2 Coax Adapters

⚠ IMPORTANT: Read Before Setting Up the Adapter

1. It takes two adapters to create a G.hn Coax Network. If you are adding onto an existing G.hn Coax Network, then please skip to Step B. If you are adding on to an already securely paired G.hn Coax Network (i.e. the Security LED is **GREEN**), then you must complete Step C.
2. We do not recommend using this G.hn Coax Adapter if you receive Cable & Satellite TV services. If this is your situation, please contact our Tech Support at (855) 313-4433 to discuss alternative options for your connectivity.



A) Set Up the First Adapter Near Your **Network Device (Modem/Router)**

1. Connect one adapter to the LAN port on the Network Device (Modem/Router) via an Ethernet cable.
 2. Connect the coaxial cable to the "G.hn" connector of the Coax Adapter and to a coax wall outlet.
 3. Plug the adapter into a power outlet via the power adapter. Note: If the Power LED ⏻ is not **GREEN**, then please refer to the FAQs on the back page.
-

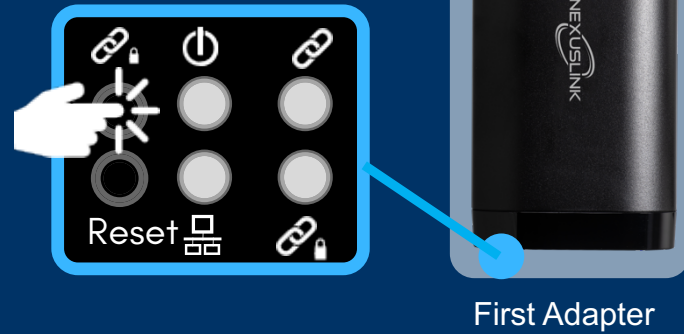
B) Set Up the Second Adapter Near Your **Internet Device (Smart TV, Gaming Console, PC, etc.)**

4. Connect the second coaxial cable to the "G.hn" connector of the other Coax Adapter and to a coax wall outlet.
 5. Plug this adapter into a power outlet via the power adapter. Note: If the Power LED ⏻ is not **GREEN**, please refer to the FAQs.
 6. Now connect the adapter into your Internet device (i.e. Gaming Console, PC, etc.) via an Ethernet cable.
 7. The Power LED, Connection LED, and Ethernet LED should be **GREEN** on both adapters.
-
-

C) Optional: Create a Secure G.hn Coax Network by Pairing

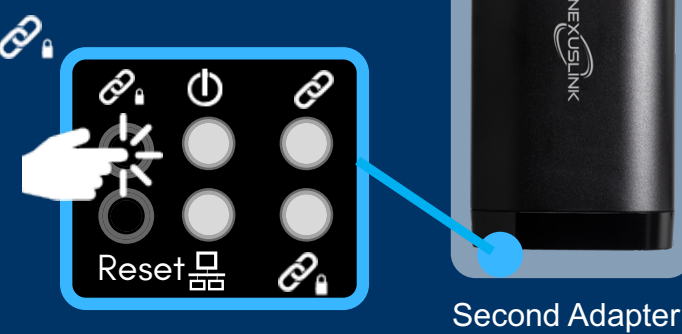
Important Note: If you are adding on to an already securely paired G.hn Coax Network, then you must complete this Step.

- 1** Press the Security Button on one adapter until you see the Security LED start blinking **GREEN**.



- 2** Within two minutes, press the Security Button on the second adapter until you see the Security LED start blinking **GREEN**.

The Security LED should be solid **GREEN** on both adapters when they are successfully paired.

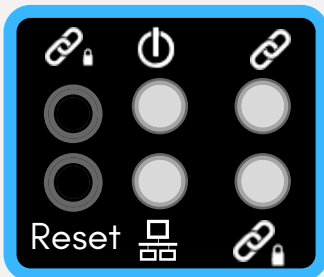


D) The device is now part of a G.hn Coax Network!

- 8** To add additional Coax Adapters, follow Steps B and C.

You can have up to 16 G.hn Coax Adapters in one G.hn Coax Network.

Buttons & LEDs Descriptions



LEDs

Power

- Adapter is powered on.
- Adapter is powered off or faulty.

Ethernet

- Ethernet LAN connection is established.
- Data over the Ethernet LAN connection is being transmitted.
- An Ethernet LAN connection is not established.

Connection

- Coax connection rate is more than 40Mbps.
- Coax connection rate is less than 40Mbps and more than 5Mbps.
- Coax connection rate is less than 5Mbps.
- There is no coax connection.

Security

- The adapter is secure (it has received or generated network keys).
- The adapter is in the process of being secure.
- The adapter is not secure.

Buttons

Security Button

Push this button for more than 2 seconds to securely pair the network.

Reset Button

Push this button for 10 seconds (until all of the LEDs on the device blink) to reset the device to factory default.

Frequently Asked Questions

Q: Which connector should I use to connect my Coax Outlet to the Coax Adapter?
A: Please use the G.hn connector – it is used to transmit networking traffic between your home networking device.

Q: When should I use the TV Out connector?
A: The TV Out connector is to be used only when transmitting CATV (Community Access Television/ Community Antenna Television) to your TV.

Q: Is the GCA-2000 interoperable with MoCA adapters?
A: No, it is not. If a location has implemented MoCA over Coax to deliver Internet service, the G.hn over Coax solution will not work in those specific locations due to frequency conflict issues with MoCA over Coax.

Q: Can I use G.hn Wave 1 and G.hn Wave 2 on the same network?
A: We do not recommend using G.hn Wave 1 and G.hn Wave 2 together in a single network.

Q: What should I do if my GCA-2000 will not power on?
A: If your GCA-2000 adapter will not power on, then try using a different power adapter to determine if the power adapter is faulty.

Q: What should I do if my devices will not connect?
A: If your GCA-2000 adapters are not connecting (i.e. the Connection LED is OFF), then first plug the problem GCA-2000 unit into a coax outlet next to the other GCA-2000 unit; both GCA-2000 having been connected by Ethernet cable to their respective devices (i.e. Network Device, Smart TV, PC, etc.). After approximately 10 seconds, the Connection LED should light up **GREEN**. If not, then first reset both devices by pressing the Reset Button on each adapter for more than 10 seconds. Then go to Step B in the Quick Install Guide and follow the installation steps.

WARNING (ATTENTION)

Unplug the power supply from the device before servicing
For indoor use only
Do NOT open the casing
Do NOT use near water
Keep away from the fire
For use in ventilated environment / space

Débranchez l'alimentation électrique avant l'entretien
Cet appareil est conçu pour l'usage intérieur seulement
N'ouvrez pas le boîtier
N'utilisez pas cet appareil près de l'eau
N'approchez pas du feu
Veuillez utiliser dans un environnement aéré

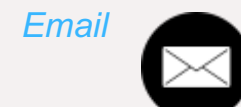
Power Specifications (Alimentation) :
Input 12Vdc, 1A



Need More Help?



Call (855) 313-4433



Email support@nexuslinkusa.com

Visit our webpage for FAQs/ User Manual/ Videos



<https://nexuslinkusa.com/product/gca-2000-kit>

